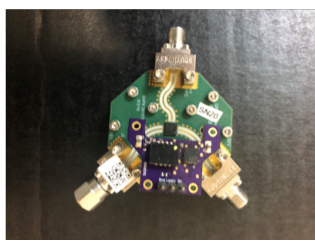
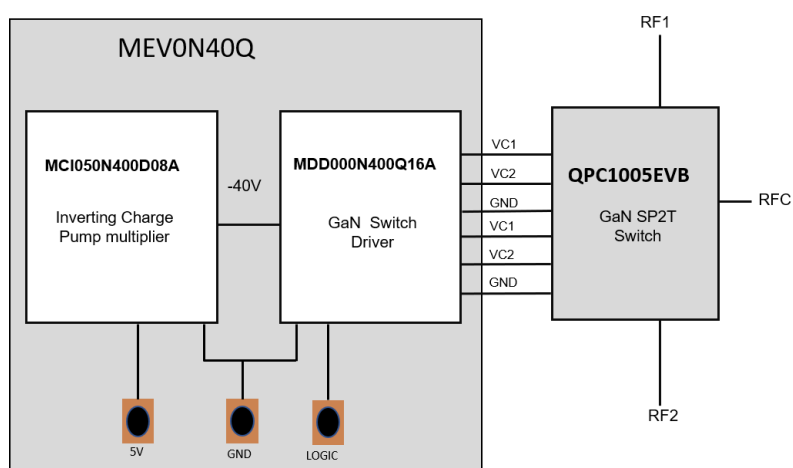


PRELIMINARY_V1

GENERAL DESCRIPTION

MEV0N40Q is an evaluation board designed to mate with the Qorvo QPC1005EVB and provides the driver logic and voltages required to drive the QPC1005 GaN SP2T. The evaluation board includes a Monzite dual GaN switch driver and an inverting charge pump that converts a +5V supply to -40V. The MEV0N40Q mounts directly to the 6-pin header provided on the top of the QPC1005EVB.

FUNCTION BLOCK DIAGRAM

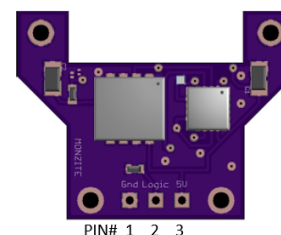


MECHANICAL

The MEV0N40Q is an evaluation board consisting of the MDD000N400Q16A dual channel GaN Switch Driver and the MCI050N400D08A Inverting Charge Pump. The MEV0N40Q mounts directly on top of the 6-pin header of the Qorvo QPC1005EVB and provides all the control logic and voltages (0V and -40V) required to drive the QPC1005 SP2T GaN Switch. The MEV0N40Q requires only 5V, GND and a single logic control input to drive the QPC1005EVB.

ECCN Code EAR99

MEV0N40Q is RoHS 3 (EU 2015/863) compliant.



PIN CONNECTIONS

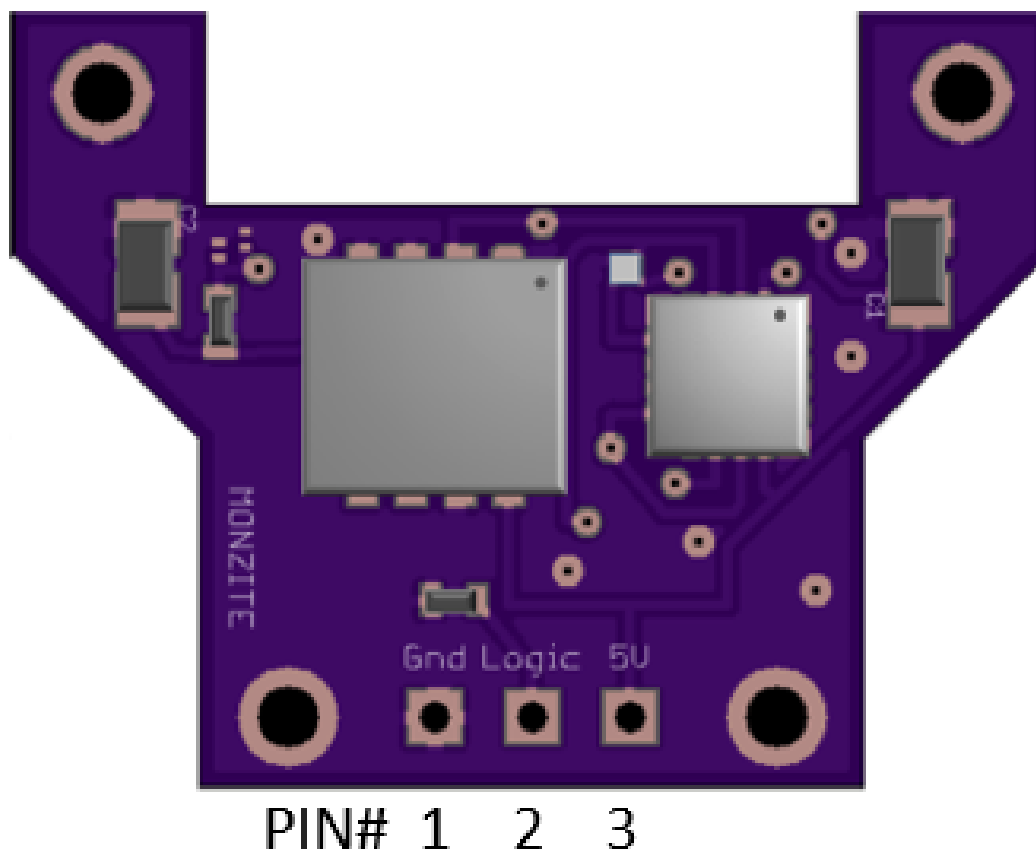
- 1 Ground
- 2 Logic
- 3 +5V

DRAWING NOT TO SCALE. DIMENSIONS ARE IN INCHES, UNLESS OTHERWISE NOTED.

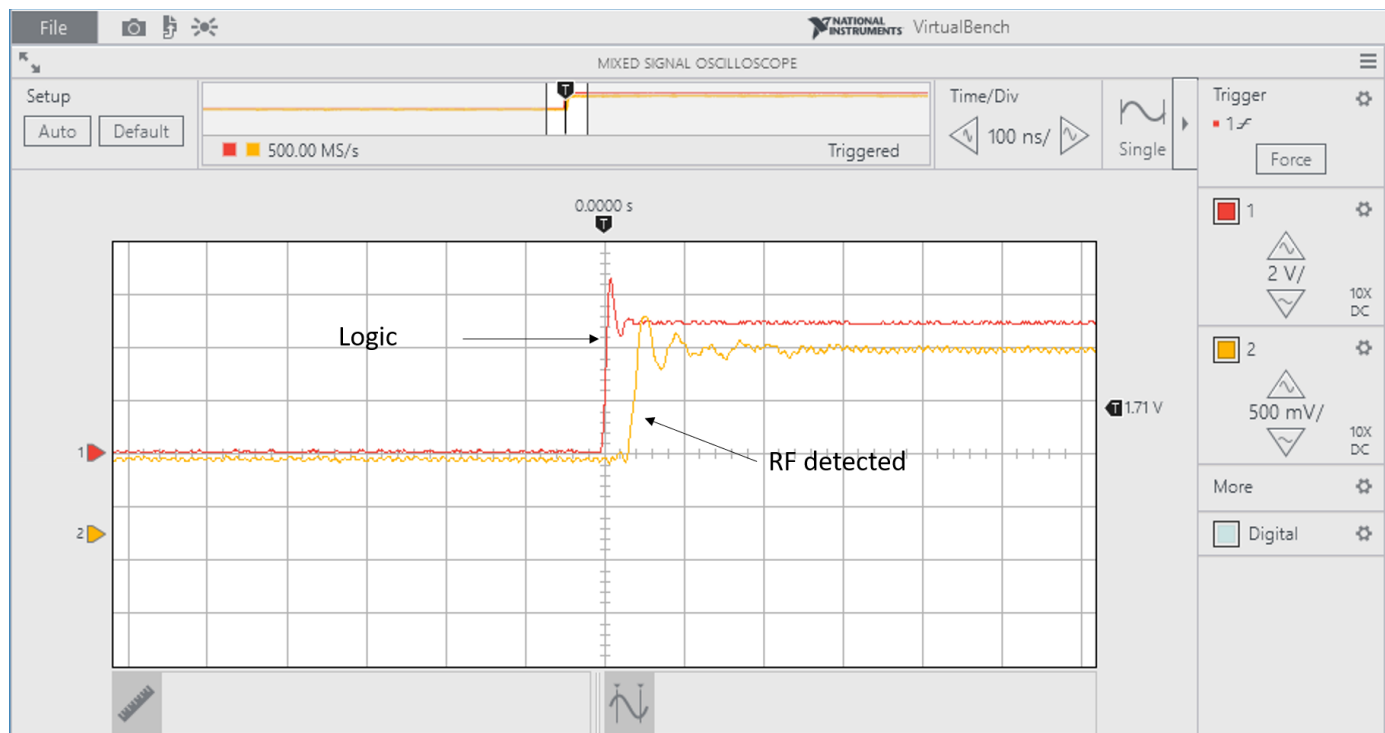
MARKING SPECIFICATIONS

Part Number: MEV0N40Q

Date Code: YYWW



WAVEFORM



WAVEFORM

